

EASY BEDROOM MAKEOVERS P.33

Sunset

25
BEST-EVER
RECIPES

OUR (& YOUR!)
TEST KITCHEN
FAVORITES

IDEAS TO STEAL FROM A
**DREAM
CABIN**



NEW YEAR ESCAPES

Recharge in the desert
Kick back on the slopes
Discover a new Hawaii

INDOOR-OUTDOOR
LIVING ON
PUGET SOUND
P. 46

JANUARY 2014

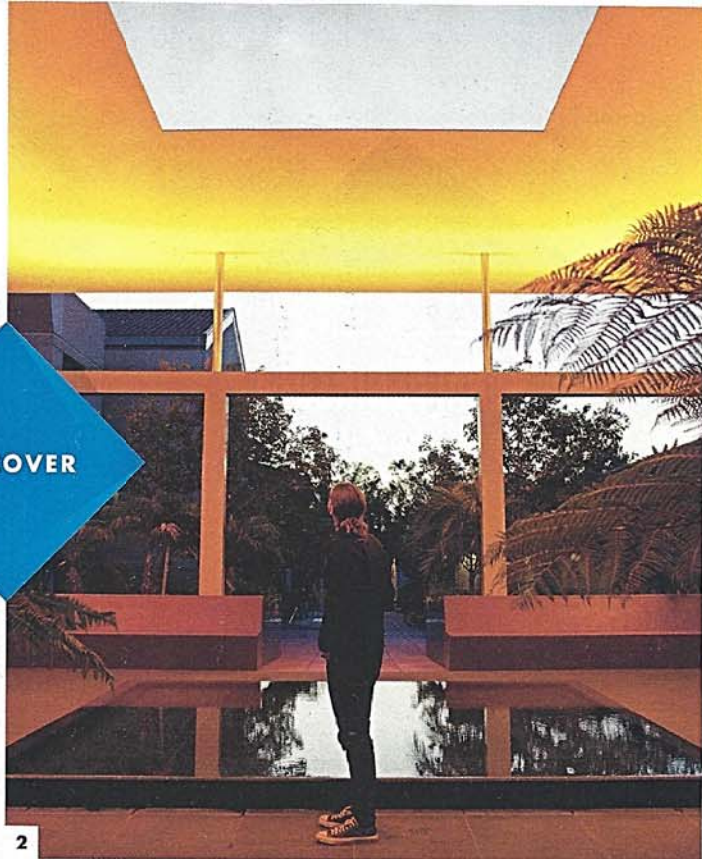
\$4.99US \$6.50CAN



VISIT US AT SUNSET.COM



DISCOVER



2

1. Thunder Mountain at Mt. Baldy Ski Lifts. 2. *Dividing the Light*, an art installation at the Pomona College Museum of Art. 3. Hotel Casa 425. 4. The Back Abbey serves Tripel Karmeliet, a Belgian beer. 5. The signature burger at The Back Abbey has aged gouda, mustard aioli, and Niman Ranch bacon.



3



4



5

A PERFECT DAY IN

CLAREMONT, CA

This college town gets extra credit for its epic backyard, accessible art collections, and happening music scene. *By Matthew Jaffe*

The hills are alive—year-round

In most ski towns, the first sign of snow sends everyone scrambling for skis and putting bikes and hiking boots in storage. But Claremonters get a full menu of outdoor options all year long.

Set at the base of the San Gabriel Mountains, Claremont is 16 miles from the old-school, no-frills Mt. Baldy Ski Lifts, home to some of SoCal's most accessible (and steepest) downhill runs. You can spend the morning skiing fresh powder, then

head back to town to explore the 86-acre Rancho Santa Ana Botanic Garden, which is dedicated to California flora. Paths meander through coast live oaks, Joshua trees, and coast redwoods—all within the city limits. *Mt. Baldy: Lift ticket \$69;*

mtbaldyskilifts.com. Rancho: \$8; 1500 N. College Ave.; rsabg.org.

Extracurriculars earn an A+

Home to seven universities, stately turn-of-the-century homes, and wide tree-lined



GETTING HERE

Claremont is 30 miles east of Los Angeles, between I-10 and State 210.

streets, Claremont often draws comparisons to East Coast college towns. The pretty campuses and their impressive art collections are open to the public.

Lushly landscaped **Scripps College**, for instance, features *The Flower Vendors*, a monumental painting by Mexican muralist Alfredo Ramos Martínez. The free **Pomona College Museum of Art**, meanwhile, has a vast permanent collection along with rotating exhibitions. This month, you'll find *Dividing the Light*, an acclaimed light show by Pomona alumnus James Turrell, held at dawn and sunset each day, when the sun's rays illuminate the installation. *Scripps*: 1030 Columbia Ave.; scrippscollege.edu. *Pomona*: 330 N. College Ave.; pomona.edu/museum.

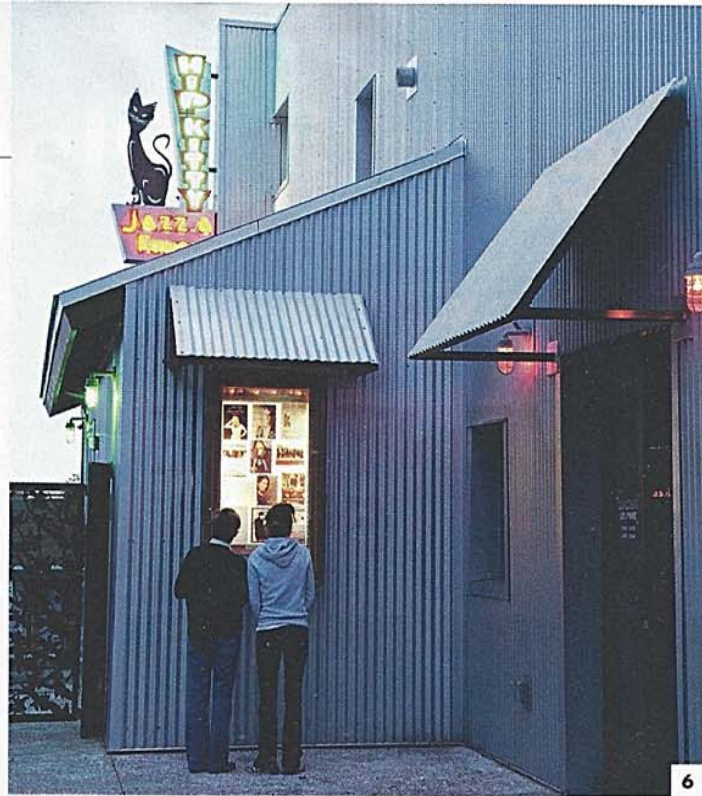
The beat goes on

Even in the age of Spotify, no self-respecting college town is complete without a music store, and Claremont's is a classic.

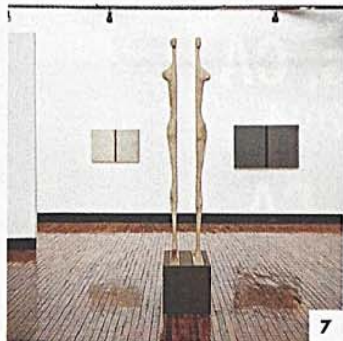
Rhino Records has been around since 1974. It has a huge assortment of used CDs and such rarities as a British pressing of *The Beatles' Second Album* for \$300. Down the street, the acoustic scene thrives at the **Folk Music Center and Museum**, which is owned by musician Ben Harper. His grandparents opened the center in 1958. Along with hosting live performances, Folk Music sells instruments from around the world (if you're looking for a ukulele, this is the place). *Rhino*: 235 Yale Ave.; rhinorecords.cc. *Folk Music*: 220 Yale; folkmusiccenter.com.

They've turned lemons into...

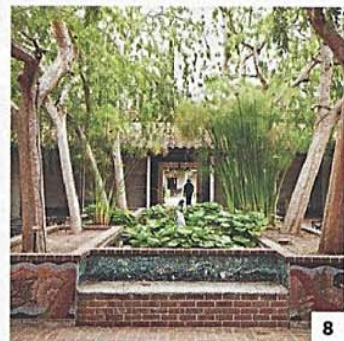
The heart of town was once a hub for citrus production. Today it's a hub, period. The 92-year-old **Claremont Packing House**, which used to box lemons and oranges, is now packed with shops, restaurants, and art galleries. Down the street, **Hotel Casa 425** blends Mission and modern styles, with 28 sleek white-and-lime-green rooms and semiprivate patios overlooking a sycamore-shaded courtyard. Around the corner in a onetime citrus icehouse, **The Back Abbey** features burgers and Belgian beers on tap, including the creamy, hoppy Voortrust saison—an exclusive. *Packing House*: 532 W. First St.; claremontpackinghouse.com. *Hotel*: From \$195; 425 W. First;



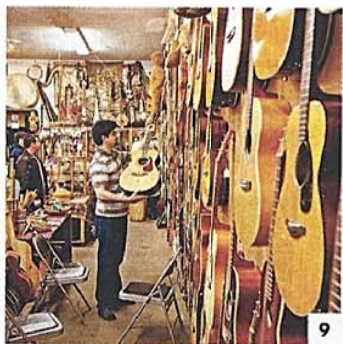
6



7



8



9

6. The Claremont Packing House is now a shopping hub. 7. A gallery display in the Packing House. 8. Seal Court on the Scripps College campus was designed by Gordon Kauffman, the Hoover Dam architect. 9. Folk Music Center.

casa425.com. *Back*: \$\$; 128 N. Oberlin Ave.; thebackabbey.com.

Dorm food it's not

The kelly green chairs and wood-fired pizza oven inside **Union on Yale** are inviting—until you spot the patio, lit by a string of white lights, with firepits and a lively bocce ball court at its heart. Come with a crew and order a whole rosemary-brined Jidori chicken

for the table. If you want to picnic on one of the campuses, assemble a gourmet lunch from **Cheese Cave's** inviting charcuterie and cheese selection, curated by sisters and owners Marnie and Lydia Clarke. *Union*: \$\$; 232 Yale Ave.; uniononyale.com. *Cheese Cave*: \$; 325 Yale; claremontcheese.com. 🍷

Blipp this page (see page 8) for the West's best ski slopes, or go to sunset.com/ski.

THE LOCAL LOWDOWN

"People from Pasadena and L.A. hear about our pretty college town with trees and good restaurants and want to come visit."

—MARNIE CLARKE, CO-OWNER OF CHEESE CAVE